

**LEGAL PATHWAYS:**

**YOUR ESSENTIAL**

# **LAW CONVERSION GUIDE**

**94%** OUR POSTGRADUATE  
STUDENTS  
**IN EMPLOYMENT  
OR FURTHER STUDY\***

**LAW** AND SO  
MUCH  
MORE



# CONTENTS

- 3. [Welcome](#)
- 4. [Why Convert to law?](#)
- 5. [Which Law Conversion course is right for me?](#)
- 6. [Our Courses](#)
- 12. [Solicitor or Barrister?](#)
- 13. [Meet your law conversion community](#)
- 14. [Listen to the podcasts: Why study a Law Conversion course](#)
- 15. [Support and Employability](#)
- 16. [The education experience](#)
- 17. [Your funding options](#)
- 18. [Next steps](#)

## WELCOME

Deciding to embark on your journey to become a legal professional is both an exciting and challenging prospect. For those who hold a non-law degree and wish to transition into the legal field, we've put together a free, fully comprehensive guide to arm you with all the relevant advice and background information. You'll discover our [key courses](#), [funding options](#) and [employability support](#) as you begin your journey towards a fulfilling legal career, with us.

Whether you aspire to be a solicitor, barrister, or want to decide that along the way, you're in capable hands, as **you'll be joining the largest community of postgraduate law conversion students.** ('LawCAB 2023).

**94%** OUR POSTGRADUATE STUDENTS  
**IN EMPLOYMENT  
OR FURTHER STUDY\***

\*Contains HESA Data: Copyright Jisc 2024. Jisc cannot accept responsibility for any inferences or conclusions derived by third parties from its data.





# WHY CONVERT TO LAW?

Many non-law graduates are converting to law and seeking a career that is rewarding, varied and lucrative.

The skills you acquire whilst studying an undergraduate degree such as critical thinking and research are also highly valuable and throughout your postgraduate studies, you will be encouraged to highlight these when applying for graduate positions.

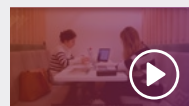
## OUR TOP REASONS

- **FINANCIAL BENEFITS:** Job site Indeed reports the average salary for a solicitor is just under £50,000 a year, based on almost 11,000 reported salaries. Of course, this figure can vary significantly based on the factors mentioned earlier, with some London based, Magic Circle firms paying experienced professionals well over £100,000 a year.
- **AN AVERAGE BARRISTER SALARY in London is anything from £50,000 to £200,000 based on five years' experience,** but as there are many areas of law, this can vary. For those with over ten years' experience, earnings can range from £65,000 to £1,000,000
- **VALUED AND RESPECTED CAREER:**  
The legal profession requires hard work and determination, culminating in the development of specialised knowledge and abilities and a career you can be proud of.
- **DIVERSE AND ENGAGING WORK:**  
Percy Preston was awarded one of our Career Changer Scholarships and was able to start his studies to become a lawyer. 'I've found that now I'm immersed in the course, my eyes have been opened to just how wide-ranging and varied the opportunities presented by legal work can be. It's very exciting.'
- **EXCELLENT CAREER PROGRESSION:**  
Many of our UK campuses are near to major legal firms and through our pro bono team you'll have the opportunity to volunteer and give legal advice to real clients, under supervision.
- **WORKING IN A REWARDING JOB:**  
Law can be a highly fulfilling and rewarding career choice as it offers the opportunity to make a real difference in people's lives and advocate for your client.
- **EMPOWERING, FIGHTING FOR JUSTICE:**  
Many of our alumni say that this is the motivation behind their career ambitions, where they can be a "voice" for clients and strive for successful outcomes.

## VIDEO



Why choose a career in Law?  
Gowling WLG



What legal fundamentals will I learn?

# WHICH LAW CONVERSION COURSE IS RIGHT FOR ME?

With a rich heritage of innovation in education and courses designed with your career ambitions in mind, we're trusted by those new to legal study to lead them through the learning journey into the future.

We recognise that each person's situation is unique. That's why we provide a variety of study options - full-time, part-time, on-campus, and online, across our courses, giving you the flexibility and choice you need to achieve success in your studies. Our passionate and experienced team has created a range of courses that blend academic rigour with practical skills through real-world case studies, ensuring you're prepared for your professional career.

## FOR SOME GUIDANCE

on which course we recommend for you, take our [career quiz](#) to help you decide between the possible routes to qualifying.



# OUR COURSES



# POSTGRADUATE DIPLOMA IN LAW (PgDL)

Our Postgraduate Diploma in Law (PgDL) is a law conversion course that teaches you to think like a lawyer and prepare for the realities of life in legal practice.

This course supports your transition into legal study with unparalleled support and guidance from our experienced, professional lecturers. Not only will you learn the academic law necessary but you will also focus on key skills and competencies crucial for your development as a lawyer. This course includes a pre-course programme where you'll study the English Legal System and Constitutional Law. This means once you start the PgDL, you're already one step ahead in your legal training.

The modules in the PgDL focus on combining core areas of law with the ability to analyse, evaluate and form critical judgements about the legal system and allows students to progress onto either a solicitor or a barrister training course.

To find out more about this course, visit the [Postgraduate Diploma in Law course page](#)

## HOW YOU'LL BE EXAMINED

60% of each module will be assessed by oral, coursework or online examination.

The other 40% of each module will be examined by Single Best Answer Questions (SBAQs).

## WE RECOMMEND THIS COURSE FOR INDIVIDUALS WHO:

- Are thinking of a career change or didn't study an undergraduate law degree.
- Are unsure at this point if they want to become a solicitor or a barrister.
- Are looking to self-fund their conversion studies: this course is not eligible for a Postgraduate Master's Loan, so it is ideal for students saving the loan for the next step in their professional study.
- Do not enjoy long-form writing assessments. Unlike the MA Law (Conversion), this course does not require a dissertation.

## LOCATION

On-campus  
and Online

## STUDY MODES

Full-time and  
part-time

## STUDY HOURS PER WEEK:

**Full-time**

45 hours

**Part-time**

25 hours

## DURATION

**Full-time**

33–35 weeks

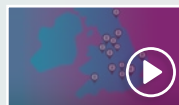
**Part-time**

70–87 weeks

## KEY BENEFITS

- Modules have been designed to anticipate the skills and knowledge required for the SQE assessments.
- Develop legal skills through practical workshops and problem-based learning.
- Analytics-based learning means you can reflect on your progress.
- Our Skills and Behaviours module will allow you to develop the soft skills and behaviours necessary for practise.

## VIDEO



Our PgDL



Is the PgDL  
right for me?

# MA LAW CONVERSION

Our MA Law (Conversion) is a conversion course for non-law graduates who want to gain a general legal qualification at master's level.

As an internationally recognised qualification, a law master's is a great addition to your academic credentials.

The MA Law (Conversion) includes a pre-course programme where you'll study the English Legal System and Constitutional Law. This means once you start your course, you're already one step ahead in your legal training.

In this course you will have a Dissertation in Law module which will allow you to attain contemporary technical legal knowledge. This module will give you the skills to demonstrate your technical expertise and advanced legal research skills to potential employers.

The structure and modules of the MA Law (Conversion) allows students to progress onto either a solicitor or a barrister training course.

To find out more about this course, visit the [MA Law \(Conversion\) course page](#).

## HOW YOU'LL BE EXAMINED

60% of each module will be assessed by oral, coursework or online examination.

The other 40% of each module will be examined by Single Best Answer Questions (SBAQs).

You will also undertake an 8000-word supervised dissertation, with a 45-minute oral presentation and Q&A on your written work.

## WE RECOMMEND THIS COURSE FOR INDIVIDUALS WHO:

- Are thinking of a career change or didn't study an undergraduate law degree.
- Are unsure at this point if they want to become a solicitor or a barrister.
- Are looking for funding for their conversion studies
- Want to focus on their legal research and writing skills through the dissertation module.

### LOCATION

On-campus  
and Online

### STUDY MODES

Full-time and  
part-time

### STUDY HOURS PER WEEK:

**Full-time**  
45 hours

**Part-time**  
25 hours

### DURATION

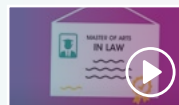
**Full-time**  
50–53 weeks

**Part-time**  
95–112 weeks

### KEY BENEFITS

- This course is eligible for a Postgraduate Master's Loan.
- Our Skills and Behaviours module will allow you to develop the key soft skills and behaviours necessary for practise.
- You'll be able to develop your legal research, writing and oral skills.

### VIDEO



Our MA Law  
(Conversion)



Is the MA Law  
(Conversion) right  
for me?



# MA LAW

## SQE 1

Our MA Law (SQE1) is a conversion course for non-law graduates who want to gain a legal qualification at master's level.

This course includes a pre-course programme where you'll study the English Legal System and Constitutional Law. This means once you start the MA Law (SQE1), you're already one step ahead in your legal training.

Upon completion of this course, you'll be able to move straight on to study the SQE2 Preparation Course. Our preparation courses do not include any behaviour skills training, so this route is perfect for individuals who feel competent with the skills needed to become a practising solicitor.

To find out more about this course, visit the [MA Law \(SQE1\) course page](#).

### HOW YOU'LL BE EXAMINED

60% of each module will be assessed by oral, coursework or online examination.

The other 40% of each module will be examined by Single Best Answer Questions (SBAQs).

At the end of your SQE1 studies you will sit two internal SBAQ Assessments. These will help prepare you for the SRA's centralised SQE Assessments – which are not part of the MA Law (SQE1).

### WE RECOMMEND THIS COURSE FOR INDIVIDUALS WHO:

- Are thinking of a career change or didn't study an undergraduate law degree, and want to become a solicitor.
- Are looking for funding for their conversion studies
- Do not require any additional legal skills and competencies training upon finishing this course.

### LOCATION

On-campus and Online

### STUDY MODES

Full-time and part-time

### STUDY HOURS PER WEEK:

**Full-time**

45 hours

**Part-time**

25 hours

### DURATION

**Full-time**

55–72 weeks

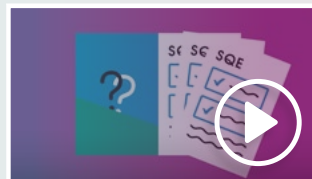
**Part-time**

107–124 weeks

### KEY BENEFITS

- Receive all online study manuals for this course for free, saving you £320. If you prefer having hardcopy versions, you can purchase them with a 50% off discount.
- This course is eligible for a Postgraduate Master's Loan.
- This course includes four weeks guaranteed Qualifying Work Experience at our Legal Advice Clinic.
- Pass first time or study for free: if you don't pass the SQE1 assessment, you can repeat our Exam Preparation Course for free (Terms and conditions apply).

### VIDEO



Our MA Law (SQE1)

# LAW CONVERSION COURSE COMPARISON

Course	Entry requirements	Course length	Course content	Fees	Postgraduate Master's Loan funding	Scholarships and Bursaries	Course progression	Possible career outcomes
<b>Postgraduate Diploma in Law (PgDL)</b>	2:2 or above in any discipline (or equivalent)	<ul style="list-style-type: none"> <li>Full-time</li> <li>Part-time</li> </ul>	<p>This course allows you to develop the key intellectual and personal skills required by lawyers, alongside skills required to pass professional examinations for qualification as a solicitor.</p> <p><b>Modules include:</b></p> <ul style="list-style-type: none"> <li>Foundations of legal knowledge.</li> <li>Law of Organisations.</li> <li>Skills &amp; Behaviours.</li> </ul>	From £11,500	No	Yes	<ul style="list-style-type: none"> <li>LLM Legal Practice (SQE1&amp;2); or</li> <li>SQE1 Preparation Course; or</li> <li>Bar Practice Course (BPC)</li> </ul>	<ul style="list-style-type: none"> <li>Solicitor; or</li> <li>Barrister</li> <li>Employers in a variety of disciplines</li> </ul>
<b>MA Law (Conversion)</b>	2:2 or above in any discipline (or equivalent)	<ul style="list-style-type: none"> <li>Full-time</li> <li>Part-time</li> </ul>	<p>This course allows you to develop the key intellectual and personal skills required by lawyers, alongside skills required to pass professional examinations for qualification as a solicitor.</p> <p>By studying a Master's degree you could be eligible for a Postgraduate Master's Loan worth up to £12,471.</p> <p><b>Modules include:</b></p> <ul style="list-style-type: none"> <li>Foundations of legal knowledge.</li> <li>Law of Organisations.</li> <li>Skills &amp; Behaviours.</li> </ul> <p>Plus 8,000 word dissertation in Law.</p>	From £13,350	Yes	Yes	<ul style="list-style-type: none"> <li>LLM Legal Practice (SQE1&amp;2); or</li> <li>SQE1 Preparation Course; or</li> <li>Bar Practice Course (BPC)</li> </ul>	<ul style="list-style-type: none"> <li>Solicitor; or</li> <li>Barrister; or</li> <li>Employers in a variety of disciplines</li> </ul>
<b>MA Law (SQE1)</b>	2:2 or above in any discipline (or equivalent)	<ul style="list-style-type: none"> <li>Full-time</li> <li>Part-time</li> </ul>	<p>This course allows you to develop the key intellectual and personal skills required by lawyers, alongside skills required to pass professional examinations for qualification as a solicitor.</p> <p>By studying a Master's degree you could be eligible for a Postgraduate Master's Loan worth up to £12,471.</p> <p><b>Modules include:</b></p> <ul style="list-style-type: none"> <li>Foundations of legal knowledge (7 modules)</li> <li>Law of Organisations.</li> <li>Skills &amp; Behaviours.</li> <li>SQE1 prep course including two internal SQE assessments.</li> </ul>	From £15,100	Yes	Yes	<ul style="list-style-type: none"> <li>SQE2 Preparation Course</li> <li>Bar Practice Course (BPC)*</li> </ul>	<ul style="list-style-type: none"> <li>Solicitor; or</li> <li>Employers in a variety of disciplines</li> </ul>
<b>SQE Law Essentials</b>	None required	<ul style="list-style-type: none"> <li>Full-time</li> <li>Part-time</li> </ul>	<p>Preparation for the academic modules covered in the SQE1 assessment – Functioning Legal Knowledge (FLK).</p> <p>This course does not lead to an academic award.</p>	£4,100	No	No	<ul style="list-style-type: none"> <li>LLM Legal Practice (SQE1&amp;2); or</li> <li>SQE1 Preparation Course</li> </ul>	<ul style="list-style-type: none"> <li>Solicitor</li> </ul>

On completion of one of our law conversion courses, those wishing to qualify as a solicitor could go on to do a course such as our [LLM Legal Practice \(SQE1&2\)](#) more specifically geared towards preparing for the SQE assessments (if SQE preparation has not been included in the law conversion) while those wanting to qualify as a barrister can apply for a [Bar Practice Course \(BPC\)](#).

\*the MA Law (SQE1) is designed to prepare non-law graduates for the solicitors' SQE1 assessment. A student can also move onto the BPC after completing MA Law (SQE1), but the PgDL and MA Law (Conversion) are more appropriate courses for future barristers

# SQE

## LAW ESSENTIALS

Our SQE Law Essentials is a law conversion course created for individuals who are looking to become a solicitor.

The course is only available online and comprises of five units of self-guided study per module, with a weekly hour-long support session to aid you in your studies. You'll learn through our dynamic learning model: Prepare, Engage, Consolidate (PEC).

In this course you'll develop the basic technical legal skills needed to acquire Functional Legal Knowledge (FLK), as well as resilience and planning skills.

As this course relies on self-guided study, we do not recommend this conversion course to someone who is completely new to the field of law.

To find out more about this course, visit the [SQE Law Essentials course page](#)

### HOW YOU'LL BE EXAMINED

You'll be given practice assessments in the form of multiple-choice questions in the final unit of each module.

### WE RECOMMEND THIS COURSE FOR INDIVIDUALS WHO:

- Early stage legal professionals who wish to reinforce their legal knowledge.
- Are LLB graduates who have completed their degree but did not immediately pursue a legal career.
- Are looking for a shorter basic course to fit around their personal and work commitments.

#### LOCATION

Online

#### STUDY MODES

Full-time and part-time

#### STUDY HOURS PER WEEK:

**Full-time**

45 hours

**Part-time**

25 hours

#### DURATION

**Full-time**

11 weeks

**Part-time**

17 weeks

#### KEY BENEFITS

- The modules on this course have been designed to anticipate the requirements of the SQE.
- Receive 50% off printed SQE study manuals when purchased together with an SQE course.
- Receive dedicated lecturer feedback in weekly sessions and identify areas for improvement.
- Benefit from our Employability Law Essentials Programme designed to help you understand the key competencies required to become a solicitor.

#### VIDEO



Our SQE Law Essentials

# SOLICITOR VS BARRISTER



Choosing between a career as a barrister or solicitor is a significant decision, as each path aligns with different key attributes and skills. We offer several courses to start your journey toward becoming a solicitor or barrister and discovering more about each role will help you to make an informed decision about your next steps.

## WHAT'S THE DIFFERENCE BETWEEN A SOLICITOR AND BARRISTER?

A solicitor provides specialist legal advice to clients, ranging from individuals to organisations, and is often the initial point of contact. They typically work for law firms, private organisations, government bodies, or the court service. Solicitors handle various legal practice areas, including criminal, family, corporate, and commercial law. Depending on their chosen practice area and field of expertise, they can operate in contentious (court based) and non-contentious (transactional based) disciplines.

A barrister on the other hand, represents clients in court and is often sought for specialist advice in their particular legal practice area. Most barristers are self-employed and work in chambers, where competition for a position can be fierce, though some may be employed by government agencies or private organisations. Barristers usually rely on groundwork by solicitors to prepare for trials or hearings. Additionally, barristers are distinguished by their court attire, wearing gowns and wigs, whereas solicitors generally wear business attire.

[Read more here](#)

## THE PATH TO BECOME A SOLICITOR

Once you have completed a non-law degree, it's recommended that you then complete a law conversion course so that you have a solid legal understanding.

**89% of law firms require non-law graduates to undertake a conversion course before beginning their SQE preparation.**

[OUR INFOGRAPHIC](#)

## THE PATH TO BECOME A BARRISTER

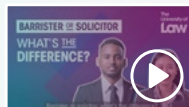
Once you have completed a non-law degree, you must complete a law conversion course to progress onto the Bar Practice Course (BPC).

**93% of BPC graduates in work were in highly skilled employment, including pupillage, 15 months after graduating (2021/22 Graduate Outcomes data).**

Contains HESA Data: Copyright Jisc 2024.

[OUR INFOGRAPHIC](#)

## VIDEO



**Solicitor vs Barrister: What's the difference**



**Advice for students who aren't sure whether to become a solicitor or barrister?**



# MEET YOUR LAW CONVERSION COMMUNITY

We take pride in our diverse and inclusive student community and are pleased to welcome students from all backgrounds and locations globally. Whether you are someone returning to study after a career break or a parent/carer who requires flexible study options, we are passionate about **inclusivity and diversity** and providing an environment where you will feel supported and able to thrive in.

When considering your legal education provider, who better to hear from than our current students and alumni? After successfully completing our courses, they have gone on to achieve great things in their chosen careers.



I CHOSE THE UNIVERSITY OF LAW FOR **ITS LONG-STANDING REPUTATION, SPECIALISM IN LAW AND STRONG RELATIONSHIPS WITH LAW FIRMS AND CHAMBERS**



INDIA HARRIS

SEBASTIAN SHADDICK  
MA LAW (CONVERSION)  
STUDENT



MISHAAL MEHMOOD  
LAKHANI  
MA LAW (CONVERSION)  
STUDENT



INDIA HARRIS  
MA LAW (CONVERSION)  
STUDENT



# LISTEN TO THE PODCASTS: WHY STUDY A LAW CONVERSION COURSE?

In our podcast series, we speak to students about their learning experiences and how they have progressed after graduating and stepping into the legal world.

## EPISODE 1:

Future Criminal Pupil, Amy Weir speaks with Family Law Solicitor, Rachel Jones about their University of Law conversion courses. Amy and Rachel discuss their experiences undertaking the GDL (now PGDL) conversion course and the journey to where they are now.

STREAM THIS EPISODE NOW ON



Listen on  
Apple Podcast



Listen on  
Spotify



Listen on  
amazon music

## EPISODE 2:

Amy Weir is joined by fellow Bar Practice Course alumni, Sophie Stevens to discuss their law conversion course experiences. Amy and Sophie explore why law conversion courses are a great alternative for those who didn't study the LLB and share their journeys to the bar.

STREAM THIS EPISODE NOW ON



Listen on  
Apple Podcast



Listen on  
Spotify



Listen on  
amazon music



# SUPPORT AND EMPLOYABILITY

Whether you're seeking your first graduate job, a career change, or advancement in your chosen field, our team is here to support your ambitions, offer guidance, and help turn your career dreams into reality.

With a large network throughout the legal industry, you have access to top firms and leaders as soon as you accept your unconditional offer with us. Our expertise and experience mean that we deliver legal training to 91 of the top 100 law firms, with exclusive relationships with 61 of the top UK law firms and many of the most prestigious US firms within the UK.

## PRO BONO

Our dynamic Pro Bono program offers exciting opportunities to gain hands-on experience under expert supervision or by shadowing seasoned practitioners, providing you with plenty of chances to elevate your career and make a real impact.

[Read more](#)

## LEGAL PRACTICE AREAS

Discover various practice areas, from corporate law to human rights law, and learn the skills required to excel in each field.

[See practice areas](#)

## STUDENT EMPLOYABILITY PROGRAMME

Our specialist legal Student Employability Programme (StEP) offers careers advice and practical activities designed to help you take your first steps toward a successful legal career.

[Find out more](#)

## MORE WAYS TO GET AHEAD

Our commitment to one-to-one guidance from a team of specialist careers advisors, practising solicitors, and industry professionals offers you a great start to your career.

## BLOG



How students can improve their employability





# THE EDUCATION EXPERIENCE

All our law lecturers are qualified lawyers, with experience across the whole spectrum of legal practice areas. Our small class sizes and dedicated Academic Coaches provide you with the support needed to achieve your goals. In the 2024 National Student Survey (NSS), we ranked in the top 10 for teaching among UK universities and have also earned a QS 5\* rating for our teaching quality.

For our course content, we collaborate closely with partner firms, regulators, and accreditation bodies to create comprehensive, high-quality programs that provide the essential legal knowledge needed for daily practice and prepare you for the realities of the legal profession. You'll benefit from classes with like-minded peers and specialised modules on skills and behaviours, including a focus on the emerging field of legal technology.

## DID YOU KNOW?

We have over 350 legally qualified lecturers, including barristers, solicitors, judges and paralegals, with real-life experience in practice allowing students to learn in a realistic, professional and contemporary context

## VIDEO



Meet our  
postgraduate  
lecturers



Meet our lecturers  
– Law Conversion





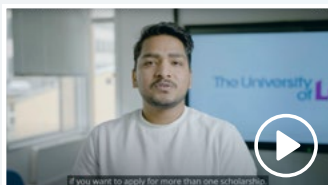
# YOUR FUNDING OPTIONS

We know that investing in a postgraduate course is no easy decision, which is why there are several options available to support you in your choice.

To explore your funding options in more detail, visit [our website](#).

<b>Postgraduate Master's Loan</b>	This is a one-time loan from the government for students in England. If your course starts on or after 1 August 2024, you could be eligible to borrow up to £12,471. There are also similar loans for students in Wales, Scotland and Northern Ireland.
<b>Employer sponsorship</b>	Some law firms and other employers sponsor their trainees, paying course fees and living expenses.
<b>Loans from private providers</b>	You can choose to borrow a graduate loan from some high street banks. You may apply to borrow from £1,000 up to £15,000. Loans are subject to status and assessment. Contact your bank for more information of any support they can provide.
<b>Scholarships and bursaries</b>	<p>We have over £3 million available across our scholarship fund, including full-fee scholarships for high academic achievers, and bursaries to support students during the rising cost of living.</p> <p>You can also apply for scholarships external to The University, such as from the Law Society.</p> <p>Find out more about our <a href="#">Scholarships and Bursaries</a>.</p> <p><b>Career Changer Scholarship</b></p> <p>We offer full fee Scholarships and partial fee scholarships for all postgraduate courses and have helped to support many students as they embark on the next chapter of their journey.</p> <p>John Clough was able to study the PgDL with our help and has gone onto work within parliament, influencing policies and receiving praise from ministers and opposition members.</p> <p><a href="#">Read John's Story</a></p>
<b>Alumni discounts</b>	<p>If you've studied a course with us already and want to continue your studies, you'll be eligible to receive a discount on your second course, as part of our Alumni Loyalty Scheme (terms and conditions apply).</p> <p>See our <a href="#">Alumni Loyalty Scheme</a>.</p>

## VIDEO



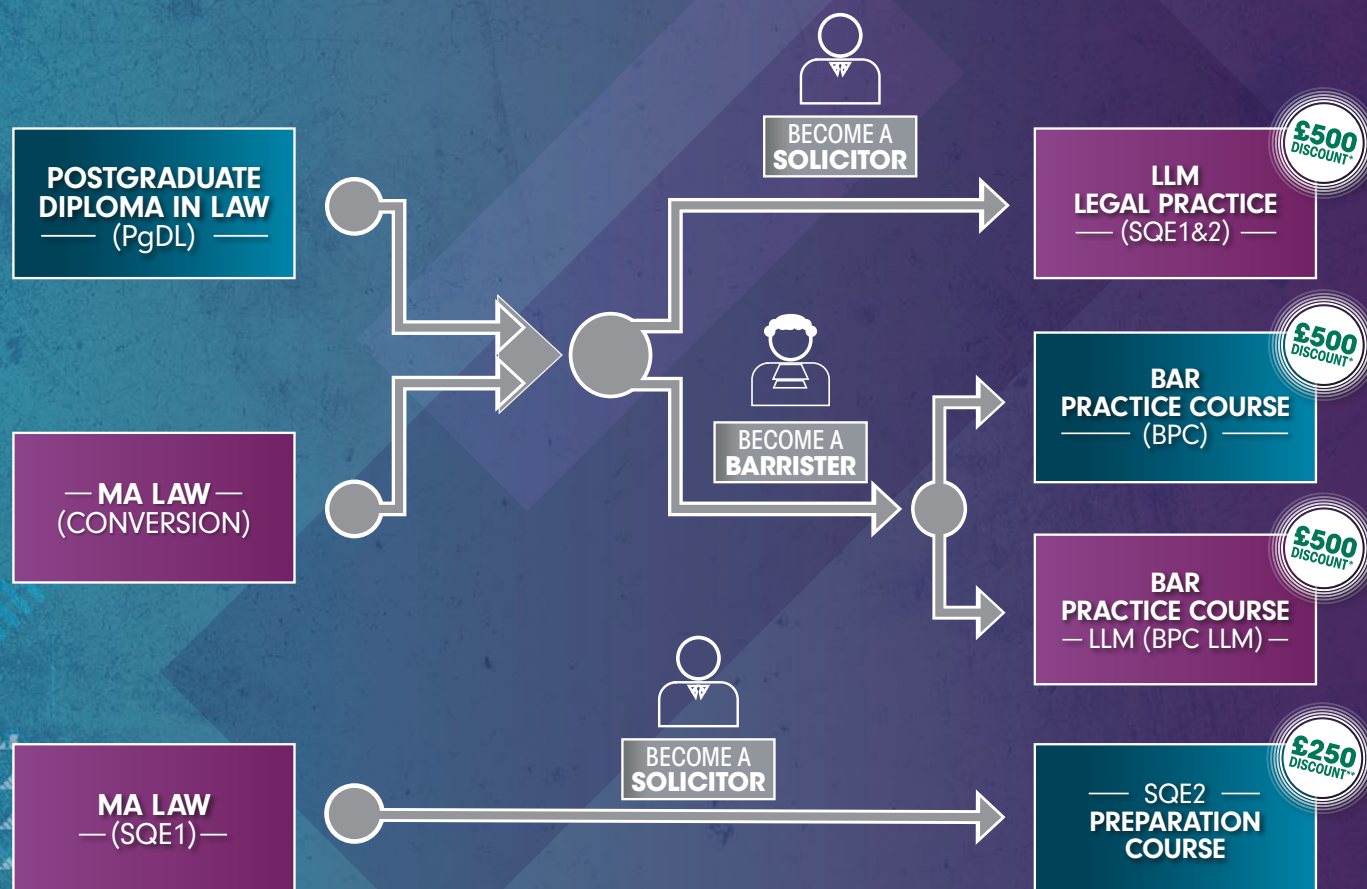
Common myths about scholarships

## CONVERTING TO LAW: USING A POSTGRADUATE STUDENT LOAN

If you're thinking about converting to law, we know that funding your courses might be a key concern for you. As you can only apply for one Postgraduate Master's Loan from the government, we offer both Master's and non-Master's conversion and vocational courses.

See our guide to the right showing the different routes to practice from conversion onwards, including which courses are eligible for a Postgraduate Master's Loan.

We also offer discounts on your course if you study more than one course with us.



### KEY:

ELIGIBLE FOR A POSTGRADUATE MASTER'S LOAN

NOT ELIGIBLE FOR A POSTGRADUATE MASTER'S LOAN

£500  
DISCOUNT

\*If you complete the PgDL/MA Law (Conversion), you'll be eligible to receive a £500 discount for these courses as part of our Alumni Loyalty Scheme.

£250  
DISCOUNT

\*\* If you complete the MA Law (SQE1), you'll be eligible to receive a £250 discount for this course as part of our Alumni Loyalty Scheme.

### Please note:

The postgraduate student funding amount and availability differs across the UK nations. Some EU nationals may also be eligible. See [law.ac.uk/funding](#) for further information.

We also offer the **SQE Law Essentials**, an online-only conversion course that is **not** eligible to receive a Postgraduate Master's Loan. This course is recommended for those who have previously worked in the legal profession or have completed their LLB long ago and are looking to get back into law.

# COME TO AN EVENT

## OPEN DAYS

Discover our courses and campuses at Open Days and imagine your future with us. Engage with our expert staff, connect with our employability team, and get firsthand insights from current students. We offer Open Days year-round, both on campus and virtually

## CONVERT TO LAW

Join our Convert to Law events which happen around 2 x a year and will provide you with information on routes to practice, our range of [conversion courses](#), and how to sell your non-law experience.

## BOOK AN OPEN DAY



## STUDY WITH US:

If you are considering studying with us and want to make an application

- [Study@Law.ac.uk](mailto:Study@Law.ac.uk)
- UK: 0800 289 997 (and select option 1)
- International: +44 (0) 1483 216 000 (and select option 1)

If you have submitted an application and would like to speak to someone from Admissions:

- [Admissions@Law.ac.uk](mailto:Admissions@Law.ac.uk)
- UK: 0800 289 997 (and select option 2)
- International: +44 (0)1483 216 000 (and select option 2)

If you are considering booking one of our SQE preparation courses:

- [Programmeadmin@law.ac.uk](mailto:Programmeadmin@law.ac.uk)
- UK: 01483 405 679
- International: +44 (0) 1483 405 679





 theuniversityoflaw

 u\_law

 @u\_law

 TheUniversityofLaw

 TheUniversityofLaw

 UniversityofLaw


 TheUniversityofLaw

 @theuniversityoflaw

 liveprospectus.com

 Our Podcasts

---

 law.ac.uk

